

General

The ST Series transformers are designed for use on controllers, motor actuators and miscellaneous low-voltage control circuits. These transformers provide rated secondary output at rated load for proper operation of system components.

Features

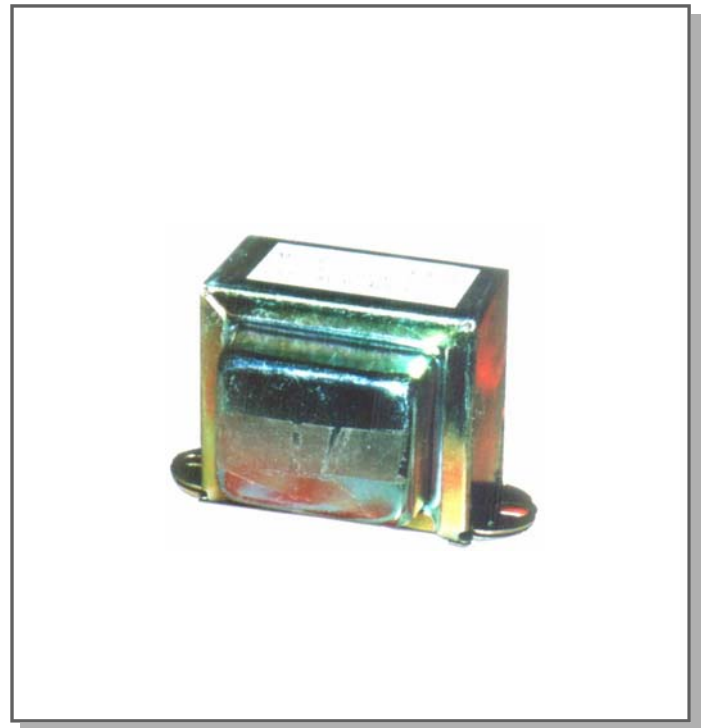
- Color coded wire leads for Simplicity
- Foot mounting

Ordering

To order the ST5724; 220-24 VAC step-down transformer, contact the nearest Cyrus' representative.

Model

ST5724-40W



Specification

Model	ST5724-40W
Ambient Limits	-40...50 °C
Primary Voltage	220 V 50/60 Hz
Secondary Voltage	24 V 50/60 Hz , 40 VA
Connections	Color Code Wire Leads : Red = Primary, Black = Secondary
Material	Feet & End Plate : Chromium plated steel Laminations : Soft Silicon Iron
Shipping Weight	1.2 kg

Dimensions in mm

